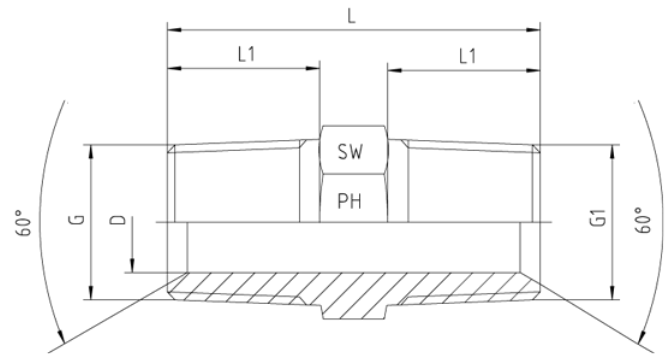
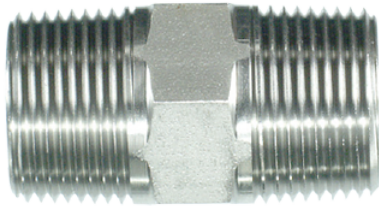


## Rubrik 5.15

### BSP - Kegelig - BSP - Kegelig



BSP - Kegelig  
 BSP - Kegelig

| Druck | Gewinde   |           | Ca. Maße |    |      |    | Bestellzeichen |
|-------|-----------|-----------|----------|----|------|----|----------------|
|       | G = BSPT  | G1 = BSPT | L        | L1 | D    | SW |                |
| 400   | 1/8"-28   | 1/8"-28   | 22,0     | 8  | 4,0  | 12 | 1070710-02-02  |
| 400   | 1/4"-19   | 1/4"-19   | 30,0     | 12 | 5,0  | 14 | 1070710-04-04  |
| 400   | 3/8"-19   | 3/8"-19   | 31,0     | 12 | 8,0  | 19 | 1070710-06-06  |
| 400   | 1/2"-14   | 1/2"-14   | 38,0     | 14 | 13,5 | 22 | 1070710-08-08  |
| 400   | 3/4"-14   | 3/4"-14   | 43,0     | 16 | 18,0 | 27 | 1070710-12-12  |
| 400   | 1"-11     | 1"-11     | 47,0     | 18 | 22,5 | 36 | 1070710-16-16  |
| 200   | 1 1/4"-11 | 1 1/4"-11 | 52,0     | 20 | 29,0 | 46 | 1070710-20-20  |
| 200   | 1 1/2"-11 | 1 1/2"-11 | 58,0     | 22 | 33,5 | 50 | 1070710-24-24  |
| 100   | 2"-11     | 2"-11     | 68,0     | 26 | 46,0 | 65 | 1070710-32-32  |