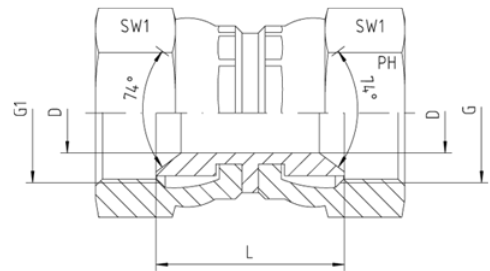
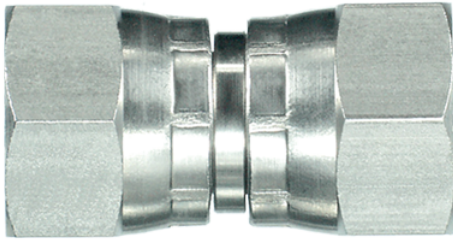


## Rubrik 6.11

### JIC - Weiblich x JIC - Weiblich



#### JIC - Weiblich - Drehbar Beide Seiten

Druck	Rohr A.D.		Gewinde	Ca. Maße			Bestellzeichen	
	PN	mm		in.	G1	L		D
350		6	1/4"	7/16"-20 UNF	21,0	4,0	17	3252511-04-04
350		8	5/16"	1/2"-20 UNF	21,0	5,0	17	3252511-05-05
350		10	3/8"	9/16"-18 UNF	24,0	7,0	19	3252511-06-06
350		12	1/2"	3/4"-16 UNF	25,5	10,0	24	3252511-08-08
350		14, 15, 16	5/8"	7/8"-14 UNF	30,0	12,0	27	3252511-10-10
350		18, 20	3/4"	1 1/16"-12 UN	30,0	15,0	32	3252511-12-12
280		25	1"	1 5/16"-12 UN	35,0	21,0	41	3252511-16-16
210		28, 30, 32	1 1/4"	1 5/8"-12 UN	35,0	27,5	50	3252511-20-20
210		35, 38	1 1/2"	1 7/8"-12 UN	40,0	33,0	55	3252511-24-24
150		50	2"	2 1/2"-12 UN	55,0	45,0	70	3252511-32-32