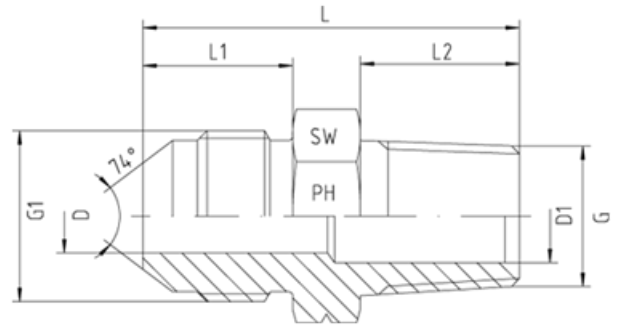
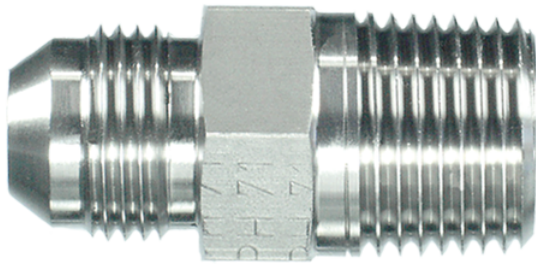


Rubrik 6.21

JIC - Männlich x Kegelig - Männlich



JIC - Männlich Whithworth-Rohrgewinde - Kegelig - Männlich

Druck	Rohr A.D.		Gewinde		Ca. Maße						Bestellzeichen	
	PN	mm	in.	G1 = UNF/UN	G = keg.	L	L1	L2	D	D1		SW
315		6	1/4"	7/16"-20	1/8"-28	29,0	14,0	8,0	4,0	4,0	12	1252820-04-02
315		6	1/4"	7/16"-20	1/4"-19	33,0	14,0	12,0	4,0	4,0	14	1252820-04-04
315		6	1/4"	7/16"-20	3/8"-19	32,7	14,0	12,0	4,0	9,0	19	1252820-04-06
315		6	1/4"	7/16"-20	1/2"-14	42,0	14,0	20,0	4,0	13,0	22	1252820-04-08
315		8	5/16"	1/2"-20	1/8"-28	28,0	14,0	8,0	4,0	4,0	14	1252820-05-02
315		8	5/16"	1/2"-20	1/4"-19	33,0	14,0	12,0	5,0	5,0	14	1252820-05-04
315		8	5/16"	1/2"-20	3/8"-19	32,7	14,0	12,0	5,0	9,0	19	1252820-05-06
315		10	3/8"	9/16"-18	1/8"-28	28,0	14,0	8,0	6,0	4,0	17	1252820-06-02
315		10	3/8"	9/16"-18	1/4"-19	31,0	14,0	12,0	6,0	6,0	17	1252820-06-04
315		10	3/8"	9/16"-18	3/8"-19	30,7	14,0	12,0	6,0	6,0	19	1252820-06-06
315		10	3/8"	9/16"-18	1/2"-14	37,0	14,0	14,0	7,5	13,0	22	1252820-06-08
315		12	1/2"	3/4"-16	1/4"-19	36,0	17,0	12,0	9,0	5,0	19	1252820-08-04
315		12	1/2"	3/4"-16	3/8"-19	35,7	17,0	12,0	9,0	9,0	19	1252820-08-06
315		12	1/2"	3/4"-16	1/2"-14	39,7	17,0	14,0	9,5	9,5	22	1252820-08-08
315		12	1/2"	3/4"-16	3/4"-14	43,2	17,0	16,0	9,5	17,0	27	1252820-08-12
315		14, 15, 16	5/8"	7/8"-14	3/8"-19	38,7	19,5	12,0	12,0	9,0	24	1252820-10-06
315		14, 15, 16	5/8"	7/8"-14	1/2"-14	42,0	19,5	14,0	12,0	12,0	24	1252820-10-08
160		14, 15, 16	5/8"	7/8"-14	3/4"-14	44,2	19,5	16,0	12,0	18,0	27	1252820-10-12
315		18, 20	3/4"	1 1/16"-12	1/2"-14	46,2	22,0	14,0	15,0	13,5	27	1252820-12-08
160		18, 20	3/4"	1 1/16"-12	3/4"-14	48,3	22,0	16,0	15,0	15,0	27	1252820-12-12

160	18, 20	3/4"	1 1/16"-12	1"-11	50,5	22,0	18,0	15,0	21,0	36	1252820-12-16
160	18, 20	3/4"	1 1/16"-12	1 1/4"-11						46	1252820-12-20
160	25	1"	1 5/16"-12	1/2"-14	47,2	23,0	14,0	21,0	13,5	36	1252820-16-08
160	25	1"	1 5/16"-12	3/4"-14	49,0	23,0	16,0	21,0	18,0	36	1252820-16-12
160	25	1"	1 5/16"-12	1"-11	51,0	23,0	18,0	21,0	21,0	36	1252820-16-16
160	25	1"	1 5/16"-12	1 1/4"-11	53,0	23,0	20,0	21,0	32,0	46	1252820-16-20
160	25	1"	1 5/16"-12	1 1/2"-11	58,0	23,0	22,0	21,0	32,0	50	1252820-16-24
160	28, 30, 32	1 1/4"	1 5/8"-12	1"-11	55,0	24,3	18,0	26,5	21,0	46	1252820-20-16
160	28, 30, 32	1 1/4"	1 5/8"-12	1 1/4"-11	56,5	24,3	20,0	26,5	31,7	46	1252820-20-20
160	28, 30, 32	1 1/4"	1 5/8"-12	1 1/2"-11	60,8	24,3	22,0	26,5	38,0	50	1252820-20-24
140	35, 38	1 1/2"	1 7/8"-12	1 1/4"-11	60,0	27,5	20,0	31,7	31,7	50	1252820-24-20
140	35, 38	1 1/2"	1 7/8"-12	1 1/2"-11	64,0	27,5	22,0	32,0	32,0	50	1252820-24-24
140	50	2"	2 1/2"-12	2"-11	72,0	33,9	26,0	45,0	45,0	65	1252820-32-32