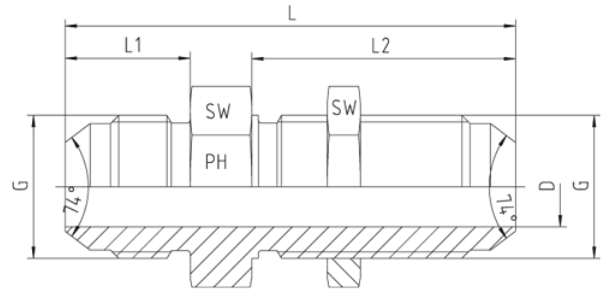
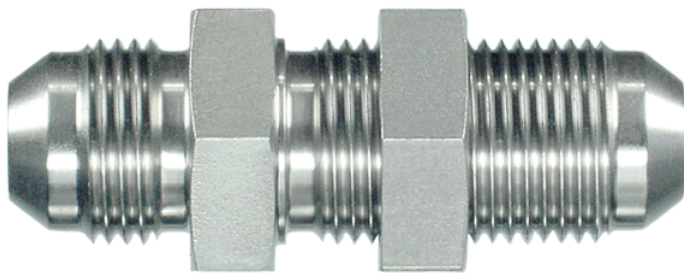


## Rubrik 6.16

### Gerade Schottverschraubungen



#### Gerade Schottverschraubungen

Druck	Rohr A.D.		Gewinde	Ca. Maße					Bestellzeichen
	mm	in.		G	L	L1	L2	D	
350	6	1/4"	7/16"-20 UNF	52,5	14,0	31,5	4,0	17	1252513-04-04
350	8	5/16"	1/2"-20 UNF	52,5	14,0	31,5	6,0	19	1252513-05-05
350	10	3/8"	9/16"-18 UNF	55,5	14,0	33,0	7,5	22	1252513-06-06
350	12	1/2"	3/4"-16 UNF	62,0	16,5	37,0	10,0	24	1252513-08-08
350	14, 15, 16	5/8"	7/8"-14 UNF	69,5	19,0	40,5	12,0	30	1252513-10-10
350	18,20	3/4"	1 1/16"-12 UN	78,5	21,5	45,0	15,5	36	1252513-12-12
280	25	1"	1 5/16"-12 UN	80,0	23,1	44,4	21,5	41	1252513-16-16
210	28, 30, 32	1 1/4"	1 5/8"-12 UN	84,0	24,3	45,7	27,5	50	1252513-20-20
210	35, 38	1 1/2"	1 7/8"-12 UN	89,5	27,5	46,0	33,0	55	1252513-24-24
150	50	2"	2 1/2"-12 UN	106,5	33,9	53,0	45,0	70	1252513-32-32