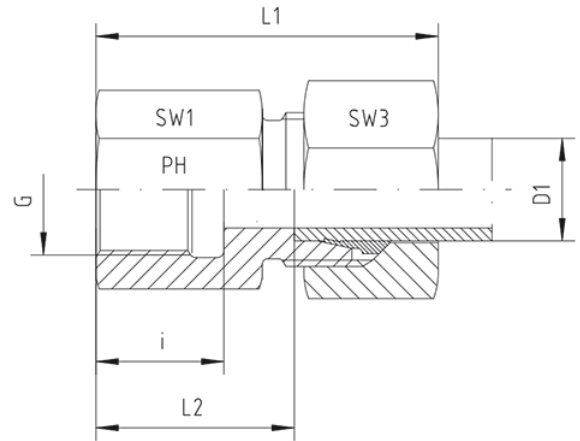
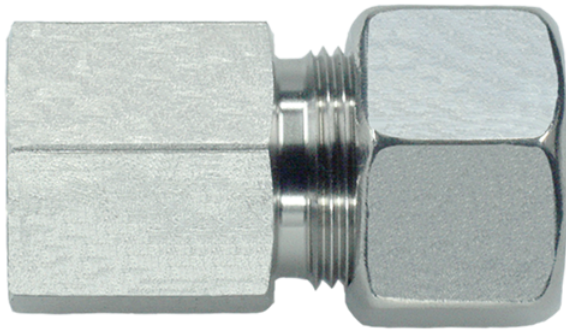


## Rubrik 8.173

### Whitworth - Zylindrisch - Innen - SC



Gerade Aufschraub-Verschraubungen Innengewinde: Whitworth-Rohrgewinde - Zylindrisch

Druck	Rohr A.D.	Gewinde	Ca. Maße					Bestellzeichen	
PN	D1	G	L1	L2	i	SW1	SW3		

#### Reihe L

315	6	G 1/8"	36,0	19,0	12,0	14	14	GAI-L-06-G 1/8"-SC
315	6	G 1/4"	41,0	24,0	17,0	19	14	GAI-L-06-G 1/4"-SC
315	6	G 3/8"	42,0	24,0	17,0	24	14	GAI-L-06-G 3/8"-SC
315	6	G 1/2"	46,0	31,0	20,0	27	14	GAI-L-06-G 1/2"-SC
315	8	G 1/8"	36,0	19,0	12,0	14	17	GAI-L-08-G 1/8"-SC
315	8	G 1/4"	41,0	24,0	17,0	19	17	GAI-L-08-G 1/4"-SC
315	8	G 3/8"	42,0	25,0	17,0	24	17	GAI-L-08-G 3/8"-SC
315	8	G 1/2"	46,0	32,0	20,0	27	17	GAI-L-08-G 1/2"-SC
315	10	G 1/8"	36,0	19,0	12,0	17	19	GAI-L-10-G 1/8"-SC
315	10	G 1/4"	42,0	25,0	17,0	19	19	GAI-L-10-G 1/4"-SC
315	10	G 3/8"	43,0	26,0	17,0	24	19	GAI-L-10-G 3/8"-SC
315	10	G 1/2"	47,0	30,0	20,0	27	19	GAI-L-10-G 1/2"-SC
315	12	G 1/4"	42,0	25,0	17,0	19	22	GAI-L-12-G 1/4"-SC
315	12	G 3/8"	43,0	26,0	17,0	24	22	GAI-L-12-G 3/8"-SC
315	12	G 1/2"	48,0	30,0	20,0	27	22	GAI-L-12-G 1/2"-SC
315	15	G 3/8"	46,0	27,0	17,5	24	27	GAI-L-15-G 3/8"-SC
315	15	G 1/2"	49,0	31,0	20,0	27	27	GAI-L-15-G 1/2"-SC
160	15	G 3/4"	53,0	34,0	22,0	32	27	GAI-L-15-G 3/4"-SC

315	18	G 3/8"	47,0	26,5	17,5	27	32	GAI-L-18-G 3/8"-SC
315	18	G 1/2"	50,5	30,5	20,0	27	32	GAI-L-18-G 1/2"-SC
160	18	G 3/4"	53,5	33,5	22,0	36	32	GAI-L-18-G 3/4"-SC
160	22	G 1/2"	55,0	33,5	20,0	32	36	GAI-L-22-G 1/2"-SC
160	22	G 3/4"	56,0	35,5	22,0	36	36	GAI-L-22-G 3/4"-SC
160	28	G 3/4"	57,5	35,0	22,0	41	41	GAI-L-28-G 3/4"-SC
160	28	G 1"	60,5	38,0	24,5	41	41	GAI-L-28-G 1"-SC
160	35	G 1 1/4"	68,5	41,0	26,5	55	50	GAI-L-35-G 1 1/4"-SC
160	42	G 1 1/2"	69,5	42,5	28,5	60	60	GAI-L-42-G 1 1/2"-SC