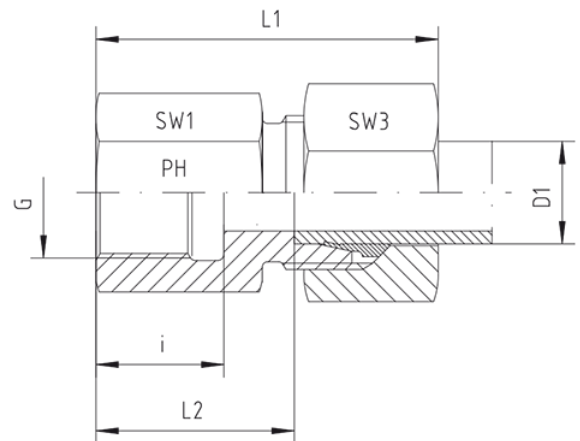
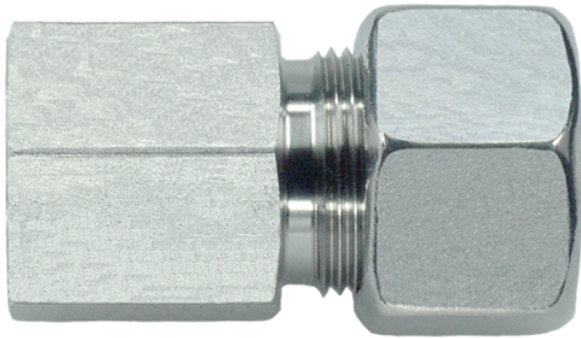


## Rubrik 8.178

### Metrisch - Zylindrisch - Innen - SC



Gerade Aufschraub-Verschraubungen  
 Innengewinde: Metrisches Feingewinde - Zylindrisch

Druck	Rohr A.D.	Gewinde	Ca. Maße					Bestellzeichen
PN	D1	G	L1	L2	i	SW1	SW3	

#### Reihe L

315	6	M 10 x 1	34	19,5	12,5	14	14	GAI-L-06-M 10x1-SC
315	8	M 12 x 1,5	39	24,0	17,0	17	17	GAI-L-08-M 12x1,5-SC
315	10	M 14 x 1,5	40	25,0	17,0	19	19	GAI-L-10-M 14x1,5-SC
315	12	M 16 x 1,5	41	26,0	17,0	22	22	GAI-L-12-M 16x1,5-SC
315	15	M 18 x 1,5	43	28,0	17,0	24	27	GAI-L-15-M 18x1,5-SC
315	18	M 22 x 1,5	46	29,5	19,0	30	32	GAI-L-18-M 22x1,5-SC
315	18	M 26 x 1,5	46	29,5	19,0	32	32	GAI-L-18-M 26x1,5-SC
160	22	M 26 x 1,5	51	34,5	21,0	32	36	GAI-L-22-M 26x1,5-SC
160	28	M 33 x 2	54	37,5	24,0	41	41	GAI-L-28-M 33x2-SC
160	35	M 42 x 2	62	40,5	26,0	55	50	GAI-L-35-M 42x2-SC
160	42	M 48 x 2	65	42,0	28,0	55	60	GAI-L-42-M 48x2-SC

#### Reihe S

630	6	M 12 x 1,5	41	26,0	17,0	17	17	GAI-S-06-M 12x1,5-SC
630	10	M 16 x 1,5	43	26,5	17,0	22	22	GAI-S-10-M 16x1,5-SC
630	8	M 14 x 1,5	41	26,0	17,0	19	19	GAI-S-08-M 14x1,5-SC
630	12	M 18 x 1,5	44	27,5	17,0	24	24	GAI-S-12-M 18x1,5-SC
630	14	M 20 x 1,5	49	31,0	19,0	27	27	GAI-S-14-M 20x1,5-SC

400	16	M 22 x 1,5	49	30,5	19,0	30	30	GAI-S-16-M 22x1,5-SC
400	20	M 27 x 2	56	34,5	22,0	32	36	GAI-S-20-M 27x2-SC
400	25	M 33 x 2	61	37,0	24,0	41	46	GAI-S-25-M 33x2-SC
400	30	M 42 x 2	68	41,5	26,0	50	50	GAI-S-30-M 42x2-SC
315	38	M 48 x 2	74	43,0	28,0	55	60	GAI-S-38-M 48x2-SC