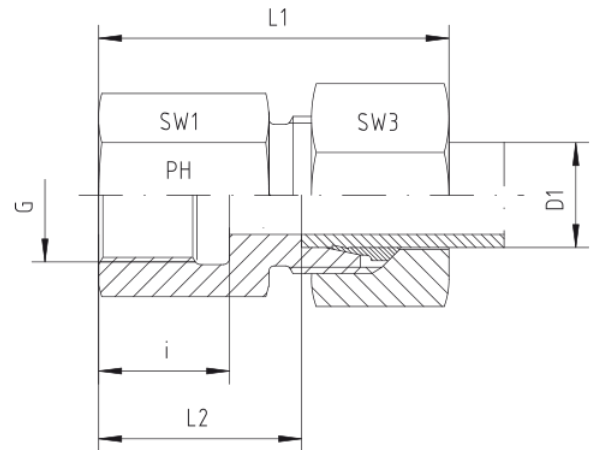
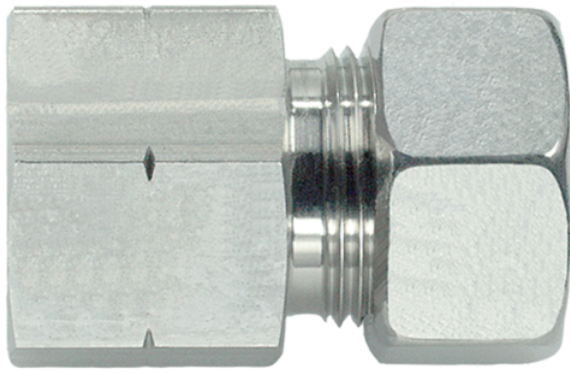


## Rubrik 8.181

### NPT - Innen - SC



Gerade Aufschraub-Verschraubungen  
 Innengewinde: NPT

Druck	Rohr A.D.	Gewinde	Ca. Maße					Bestellzeichen
			L1	L2	i	SW1	SW3	

#### Reihe L

PN	D1	G	L1	L2	i	SW1	SW3	
315	6	1/8" NPT	34	19,0	11,6	14	14	GAI-L-06-1/8"-NPT-SC
315	6	1/4" NPT	38	23,5	16,4	19	14	GAI-L-06-1/4"-NPT-SC
315	6	3/8" NPT			17,4	24	14	GAI-L-06-3/8"-NPT-SC
315	8	1/4" NPT	38	23,5	16,4	19	17	GAI-L-08-1/4"-NPT-SC
315	8	3/8" NPT	39	25,0	17,4	24	17	GAI-L-08-3/8"-NPT-SC
315	10	1/4" NPT	39	24,0	16,4	19	19	GAI-L-10-1/4"-NPT-SC
315	10	3/8" NPT			17,4	24	19	GAI-L-10-3/8"-NPT-SC
315	10	1/2" NPT			22,6	27	19	GAI-L-10-1/2"-NPT-SC
315	12	1/4" NPT	42	25,0	16,4	19	22	GAI-L-12-1/4"-NPT-SC
315	12	3/8" NPT	42	27,0	17,4	24	22	GAI-L-12-3/8"-NPT-SC
315	12	1/2" NPT	47	32,0	22,6	27	22	GAI-L-12-1/2"-NPT-SC
315	15	3/8" NPT		26,0	17,4	24	27	GAI-L-15-3/8"-NPT-SC
315	15	1/2" NPT	48	33,0	22,6	27	27	GAI-L-15-1/2"-NPT-SC
315	18	1/2" NPT	49	32,5	22,6	27	27	GAI-L-18-1/2"-NPT-SC
160	22	3/4" NPT	52	35,5	23,1	36	36	GAI-L-22-3/4"-NPT-SC
160	28	1" NPT	57	40,5	27,8	41	41	GAI-L-28-1"-NPT-SC
160	35	1 1/4" NPT	62	40,5	28,3	55	50	GAI-L-35-1 1/4"-NPT-SC
160	42	1 1/2" NPT	65	42,0	28,3	55	60	GAI-L-42-1 1/2"-NPT-SC

**Reihe S**

630	6	1/4" NPT	41	26,0	16,4	19	17	GAI-S-06-1/4"-NPT-SC
630	8	1/4" NPT	41	26,0	16,4	19	19	GAI-S-08-1/4"-NPT-SC
630	10	3/8" NPT	44	27,0	17,4	24	22	GAI-S-10-3/8"-NPT-SC
630	12	3/8" NPT	44	27,5	17,4	24	24	GAI-S-12-3/8"-NPT-SC
630	12	1/2" NPT	50	33,5	22,6	27	24	GAI-S-12-1/2"-NPT-SC
630	14	1/2" NPT	53	35,0	22,6	27	27	GAI-S-14-1/2"-NPT-SC
400	16	3/8" NPT	48	27,5	17,4	27	30	GAI-S-16-3/8"-NPT-SC
400	16	1/2" NPT	50	34,5	22,6	27	30	GAI-S-16-1/2"-NPT-SC
400	20	3/4" NPT	57	35,5	23,1	36	36	GAI-S-20-3/4"-NPT-SC
400	25	1" NPT	65	41,0	27,8	41	46	GAI-S-25-1"-NPT-SC
400	30	1 1/4" NPT	70	43,5	28,3	55	50	GAI-S-30-1 1/4"-NPT-SC
315	38	1 1/2" NPT	74	43,0	28,3	60	60	GAI-S-38-1 1/2"-NPT-SC