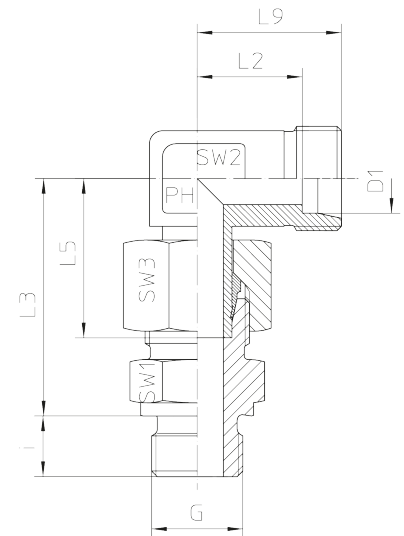
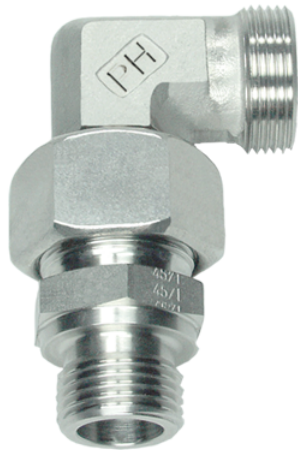


Rubrik 8.215

Whitworth - Zylindrisch - Vormontiert - OMD



Einstellbare Winkel-Verschraubungen Einsteckausführung - Vormontiert Einschraubgewinde: Whitworth-Rohrgewinde - Zylindrisch Abdichtung durch Dichtkante Form B Der Anschluss ist vormontiert. Die Fertigmontage erfolgt im Stutzen mit ca. 1/2 Umdrehung der Üb

| Druck | Rohr A.D. | Gewinde | Ca. Maße | | | | | | | Bestellzeichen |
|----------------|-----------|----------|----------|------|------|----|-----|-----|-----|-----------------------|
| | | | L3 | L5 | L9 | i | SW1 | SW2 | SW3 | |
| PN | D1 | G | | | | | | | | |
| Reihe L | | | | | | | | | | |
| 315 | 6 | G 1/8" | 34,5 | 26,0 | 19,0 | 8 | 14 | 12 | 14 | EVW-L-06-G 1/8"-OMD |
| 315 | 8 | G 1/4" | 37,5 | 27,5 | 21,0 | 12 | 17 | 12 | 17 | EVW-L-08-G 1/4"-OMD |
| 315 | 10 | G 1/4" | 40,0 | 29,0 | 22,0 | 12 | 19 | 14 | 19 | EVW-L-10-G 1/4"-OMD |
| 315 | 12 | G 1/4" | 42,0 | 29,5 | 24,0 | 12 | 19 | 17 | 22 | EVW-L-12-G 1/4"-OMD |
| 315 | 12 | G 3/8" | 42,0 | 29,5 | 24,0 | 12 | 22 | 17 | 22 | EVW-L-12-G 3/8"-OMD |
| 315 | 12 | G 1/2" | 43,0 | 29,5 | 24,0 | 14 | 27 | 17 | 22 | EVW-L-12-G 1/2"-OMD |
| 315 | 15 | G 1/2" | 46,5 | 32,5 | 28,0 | 14 | 27 | 19 | 27 | EVW-L-15-G 1/2"-OMD |
| 315 | 18 | G 1/2" | 50,0 | 35,5 | 31,0 | 14 | 27 | 24 | 32 | EVW-L-18-G 1/2"-OMD |
| 160 | 22 | G 3/4" | 55,0 | 38,5 | 35,0 | 16 | 32 | 27 | 36 | EVW-L-22-G 3/4"-OMD |
| 160 | 28 | G 1" | 61,0 | 43,5 | 38,0 | 18 | 41 | 36 | 41 | EVW-L-28-G 1"-OMD |
| 160 | 35 | G 1 1/4" | 71,5 | 54,0 | 45,0 | 20 | 50 | 41 | 50 | EVW-L-35-G 1 1/4"-OMD |
| 160 | 42 | G 1 1/2" | 75,0 | 56,0 | 51,0 | 22 | 55 | 50 | 60 | EVW-L-42-G 1 1/2"-OMD |
| Reihe S | | | | | | | | | | |
| 630 | 6 | G 1/4" | 40,0 | 27,0 | 23,0 | 12 | 19 | 12 | 17 | EVW-S-06-G 1/4"-OMD |

| | | | | | | | | | | |
|-----|----|----------|------|------|------|----|----|----|----|-----------------------|
| 630 | 8 | G 1/4" | 42,5 | 27,5 | 24,0 | 12 | 19 | 14 | 19 | EVW-S-08-G 1/4"-OMD |
| 630 | 10 | G 3/8" | 45,0 | 30,0 | 25,0 | 12 | 22 | 17 | 22 | EVW-S-10-G 3/8"-OMD |
| 630 | 12 | G 3/8" | 48,0 | 31,0 | 29,0 | 12 | 22 | 17 | 24 | EVW-S-12-G 3/8"-OMD |
| 630 | 12 | G 1/2" | 50,0 | 31,0 | 29,0 | 14 | 27 | 17 | 24 | EVW-S-12-G 1/2"-OMD |
| 630 | 14 | G 1/2" | 54,0 | 35,0 | 30,0 | 14 | 27 | 19 | 27 | EVW-S-14-G 1/2"-OMD |
| 400 | 16 | G 1/2" | 55,0 | 36,5 | 33,0 | 14 | 27 | 24 | 30 | EVW-S-16-G 1/2"-OMD |
| 400 | 20 | G 3/4" | 65,0 | 44,5 | 37,0 | 16 | 32 | 27 | 36 | EVW-S-20-G 3/4"-OMD |
| 400 | 25 | G 1" | 73,0 | 50,0 | 42,0 | 18 | 41 | 36 | 46 | EVW-S-25-G 1"-OMD |
| 400 | 30 | G 1 1/4" | 78,5 | 55,0 | 49,0 | 20 | 50 | 41 | 50 | EVW-S-30-G 1 1/4"-OMD |
| 250 | 38 | G 1 1/2" | 89,0 | 63,0 | 57,0 | 22 | 55 | 50 | 60 | EVW-S-38-G 1 1/2"-OMD |