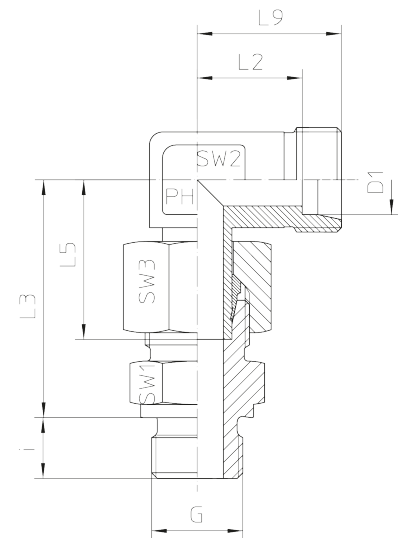
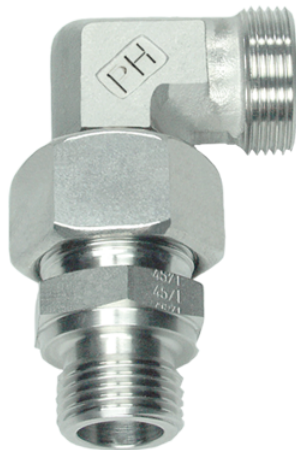


## Rubrik 8.218

### Metrisch - Zylindrisch - Vormontiert - OMD



Einstellbare Winkel-Verschraubungen Einsteckausführung - Vormontiert Einschraubgewinde: Metrisches Feingewinde - Zylindrisch Abdichtung durch Dichtkante Form B Der Anschluss ist vormontiert. Die Fertigmontage erfolgt im Stutzen mit ca. 1/2 Umdrehung der Ü

| Druck | Rohr A.D. | Gewinde | Ca. Maße |    |    |    |     |     |     | Bestellzeichen |
|-------|-----------|---------|----------|----|----|----|-----|-----|-----|----------------|
|       |           |         | L2       | L3 | L5 | L9 | SW1 | SW2 | SW3 |                |
| PN    | D1        | G       |          |    |    |    |     |     |     |                |

#### Reihe L

|     |    |            |      |      |      |      |    |    |    |    |                       |
|-----|----|------------|------|------|------|------|----|----|----|----|-----------------------|
| 315 | 6  | M 10 x 1   | 12,0 | 34,5 | 26,0 | 19,0 | 8  | 14 | 12 | 14 | EVW-L-06-M 10x1-OMD   |
| 315 | 8  | M 12 x 1,5 | 14,0 | 37,5 | 27,5 | 21,0 | 12 | 17 | 12 | 17 | EVW-L-08-M 12x1,5-OMD |
| 315 | 10 | M 14 x 1,5 | 15,0 | 40,0 | 29,0 | 22,0 | 12 | 19 | 14 | 19 | EVW-L-10-M 14x1,5-OMD |
| 315 | 12 | M 16 x 1,5 | 17,0 | 42,0 | 29,5 | 24,0 | 12 | 22 | 17 | 22 | EVW-L-12-M 16x1,5-OMD |
| 315 | 15 | M 18 x 1,5 | 21,0 | 46,0 | 32,5 | 28,0 | 12 | 24 | 19 | 27 | EVW-L-15-M 18x1,5-OMD |
| 315 | 18 | M 22 x 1,5 | 23,5 | 50,0 | 35,5 | 31,0 | 14 | 27 | 24 | 32 | EVW-L-18-M 22x1,5-OMD |
| 160 | 22 | M 26 x 1,5 | 27,5 | 55,0 | 38,5 | 35,0 | 16 | 32 | 27 | 36 | EVW-L-22-M 26x1,5-OMD |
| 160 | 28 | M 33 x 2   | 30,5 | 61,0 | 43,5 | 38,0 | 18 | 41 | 36 | 41 | EVW-L-28-M 33x2-OMD   |
| 160 | 35 | M 42 x 2   | 34,5 | 71,5 | 54,0 | 45,0 | 20 | 50 | 41 | 50 | EVW-L-35-M 42x2-OMD   |
| 160 | 42 | M 48 x 2   | 40,0 | 75,0 | 56,0 | 51,0 | 22 | 55 | 50 | 60 | EVW-L-42-M 48x2-OMD   |

#### Reihe S

|     |    |            |      |      |      |      |    |    |    |    |                       |
|-----|----|------------|------|------|------|------|----|----|----|----|-----------------------|
| 630 | 6  | M 12 x 1,5 | 16,0 | 40,0 | 27,0 | 23,0 | 12 | 17 | 12 | 17 | EVW-S-06-M 12x1,5-OMD |
| 630 | 8  | M 14 x 1,5 | 17,0 | 42,5 | 27,5 | 24,0 | 12 | 19 | 14 | 19 | EVW-S-08-M 14x1,5-OMD |
| 630 | 10 | M 16 x 1,5 | 17,5 | 45,0 | 30,0 | 25,0 | 12 | 22 | 17 | 22 | EVW-S-10-M 16x1,5-OMD |
| 630 | 12 | M 18 x 1,5 | 21,5 | 48,0 | 31,0 | 29,0 | 12 | 24 | 17 | 24 | EVW-S-12-M 18x1,5-OMD |
| 630 | 14 | M 20 x 1,5 | 22,0 | 54,0 | 35,0 | 30,0 | 14 | 27 | 19 | 27 | EVW-S-14-M 20x1,5-OMD |
| 400 | 16 | M 22 x 1,5 | 24,5 | 55,0 | 36,5 | 33,0 | 14 | 27 | 24 | 30 | EVW-S-16-M 22x1,5-OMD |

|     |    |          |      |      |      |      |    |    |    |    |                     |
|-----|----|----------|------|------|------|------|----|----|----|----|---------------------|
| 400 | 20 | M 27 x 2 | 26,5 | 65,0 | 44,5 | 37,0 | 16 | 32 | 27 | 36 | EVW-S-20-M 27x2-OMD |
| 400 | 25 | M 33 x 2 | 30,0 | 73,0 | 50,0 | 42,0 | 18 | 41 | 36 | 46 | EVW-S-25-M 33x2-OMD |
| 400 | 30 | M 42 x 2 | 35,5 | 78,5 | 55,0 | 49,0 | 20 | 50 | 41 | 50 | EVW-S-30-M 42x2-OMD |
| 250 | 38 | M 48 x 2 | 41,0 | 89,0 | 63,0 | 57,0 | 22 | 55 | 50 | 60 | EVW-S-38-M 48x2-OMD |