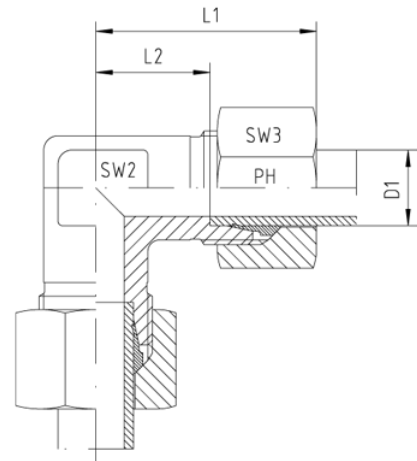


## Rubrik 8.25

### WV - Winkel-Verschraubungen - SC



Druck	Rohr A.D.	Ca. Maße					Bestellzeichen
PN	D1	L1	L2	SW2	SW3		
<b>Reihe L</b>							
500	6	27	12,0	12	14	WV-L-06-SC	
500	8	29	14,0	12	17	WV-L-08-SC	
500	10	30	15,0	14	19	WV-L-10-SC	
400	12	32	17,0	17	22	WV-L-12-SC	
400	15	36	21,0	19	27	WV-L-15-SC	
400	18	40	23,5	24	32	WV-L-18-SC	
250	22	44	27,5	27	36	WV-L-22-SC	
250	28	47	30,5	36	41	WV-L-28-SC	
250	35	56	34,5	41	50	WV-L-35-SC	
250	42	63	40,0	50	60	WV-L-42-SC	
<b>Reihe S</b>							
800	6	31	16,0	12	17	WV-S-06-SC	
800	8	32	17,0	14	19	WV-S-08-SC	
800	10	34	17,5	17	22	WV-S-10-SC	
630	12	38	21,5	17	24	WV-S-12-SC	
630	14	40	22,0	19	27	WV-S-14-SC	
630	16	43	24,5	24	30	WV-S-16-SC	
420	20	48	26,5	27	36	WV-S-20-SC	
420	25	54	30,0	36	46	WV-S-25-SC	

420	30	62	35,5	41	50	WV-S-30-SC
420	38	72	41,0	50	60	WV-S-38-SC