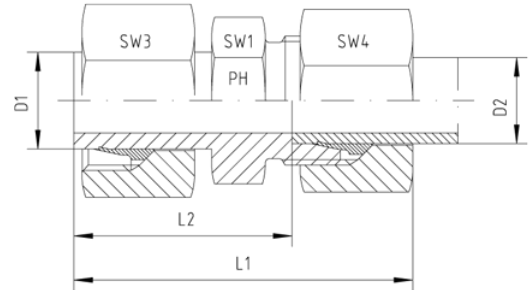
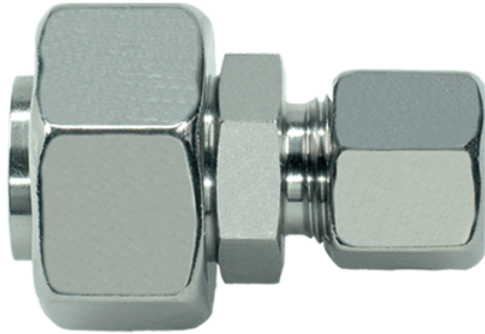


Rubrik 8.266

Konus-Reduzieranschlüsse - SC



Anschluss D1 ist vormontiert. Die Fertigmontage erfolgt im Stutzen mit ca. 1/2 Umdrehung der Überwurfmutter über den Punkt des deutlich spürbaren Kraftanstieges.

Druck	Rohr A.D.		Ca. Maße					Bestellzeichen
	PN	D1	D2	L1	L2	SW1	SW3	
Reihe S								
630	8	6	47,0	32,0	14	19	17	KOR-S-08/06-SC
630	10	6	48,0	33,0	14	22	17	KOR-S-10/06-SC
630	10	8	48,0	33,0	17	22	19	KOR-S-10/08-SC
630	12	6	50,0	35,0	14	24	17	KOR-S-12/06-SC
630	12	8	50,0	35,0	17	24	19	KOR-S-12/08-SC
630	12	10	51,0	34,5	19	24	22	KOR-S-12/10-SC
630	14	6	50,0	35,0	17	27	17	KOR-S-14/06-SC
630	14	8	50,0	35,0	17	27	19	KOR-S-14/08-SC
630	14	10	51,0	34,5	19	27	22	KOR-S-14/10-SC
630	14	12	51,0	34,5	22	27	24	KOR-S-14/12-SC
400	16	6	54,0	39,0	17	30	17	KOR-S-16/06-SC
400	16	8	54,0	39,0	17	30	19	KOR-S-16/08-SC
400	16	10	55,0	38,5	19	30	22	KOR-S-16/10-SC
400	16	12	55,0	38,5	22	30	24	KOR-S-16/12-SC
400	16	14	58,0	40,0	22	30	27	KOR-S-16/14-SC
400	20	6	58,5	43,5	22	36	17	KOR-S-20/06-SC
400	20	8	58,5	43,5	22	36	19	KOR-S-20/08-SC
400	20	10	59,5	43,0	22	36	22	KOR-S-20/10-SC

400	20	12	59,5	43,0	22	36	24	KOR-S-20/12-SC
400	20	14	60,5	42,5	24	36	27	KOR-S-20/14-SC
400	20	16	63,0	44,5	27	36	30	KOR-S-20/16-SC
400	25	6	59,0	44,0	27	46	17	KOR-S-25/06-SC
400	25	8	59,0	44,0	27	46	19	KOR-S-25/08-SC
400	25	10	61,0	44,5	27	46	22	KOR-S-25/10-SC
400	25	12	63,0	46,5	27	46	24	KOR-S-25/12-SC
400	25	14	64,0	46,0	27	46	27	KOR-S-25/14-SC
400	25	16	67,0	48,5	27	46	30	KOR-S-25/16-SC
400	25	20	70,0	48,5	32	46	36	KOR-S-25/20-SC
400	30	6	69,0	54,0	32	50	17	KOR-S-30/06-SC
400	30	8	69,0	54,0	32	50	19	KOR-S-30/08-SC
400	30	10	70,0	53,5	32	50	22	KOR-S-30/10-SC
400	30	12	70,0	53,5	32	50	24	KOR-S-30/12-SC
400	30	14	71,0	53,0	32	50	27	KOR-S-30/14-SC
400	30	16	73,0	54,5	32	50	30	KOR-S-30/16-SC
400	30	20	76,0	54,5	32	50	36	KOR-S-30/20-SC
400	30	25	81,5	57,5	41	50	46	KOR-S-30/25-SC
250	38	6	70,0	55,0	41	60	17	KOR-S-38/06-SC
250	38	8	70,0	55,0	41	60	19	KOR-S-38/08-SC
250	38	10	71,0	54,5	41	60	22	KOR-S-38/10-SC
250	38	12	71,0	54,5	41	60	24	KOR-S-38/12-SC
250	38	14	74,0	56,0	41	60	27	KOR-S-38/14-SC
250	38	16	74,0	55,5	41	60	30	KOR-S-38/16-SC
250	38	20	79,0	57,5	41	60	36	KOR-S-38/20-SC
250	38	25	84,0	60,0	41	60	46	KOR-S-38/25-SC
250	38	30	87,0	60,5	46	60	50	KOR-S-38/30-SC