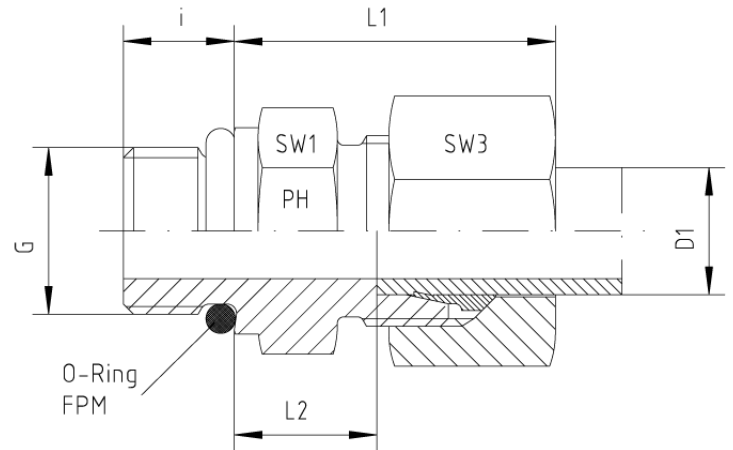
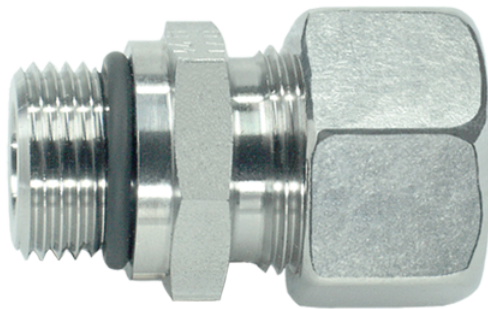


## Rubrik 8.96

### UNF - Standard



Gerade Einschraubverschraubungen S-Reihe Einschraubgewinde: UNF (ASA B 1.1 - 1960) Abdichtung durch Runddichtring (O-Ring) - SAE J 514  
 Achtung: Spezielle Gewindeaussenkung erforderlich. Andere Sprunggrößen auf Anfrage!

Druck	Rohr A.D.	Gewinde	Ca. Maße					O-Ring	Bestellzeichen
PN	D1	G	L1	L2	i	SW1	SW3		
<b>Reihe S</b>									
630	6	7/16"-20 UNF	28,0	13,0	9,2	17	17	8,92 x 1,83	GE-S-06-7/16"-UNF
630	6	9/16"-18 UNF	29,0	13,0	10,0	19	17	11,90 x 1,98	GE-S-06-9/16"-UNF
630	8	7/16"-20 UNF	30,0	15,0	9,2	17	19	8,92 x 1,83	GE-S-08-7/16"-UNF
630	8	1/2"-20 UNF	30,0	15,0	9,2	17	19	10,52 x 1,83	GE-S-08-1/2"-UNF
630	8	9/16"-18 UNF	30,0	13,0	10,0	19	19	11,90 x 1,98	GE-S-08-9/16"-UNF
630	10	7/16"-20 UNF	41,0	13,5	9,2	19	22	8,92 x 1,83	GE-S-10-7/16"-UNF
630	10	9/16"-18 UNF	31,0	15,5	10,0	19	22	11,90 x 1,98	GE-S-10-9/16"-UNF
630	10	3/4"-16 UNF	31,0	15,0	11,2	24	22	16,36 x 2,20	GE-S-10-3/4"-UNF
630	12	9/16"-18 UNF	33,5	14,5	10,0	22	24	11,90 x 1,98	GE-S-12-9/16"-UNF
630	12	3/4"-16 UNF	33,5	17,5	11,2	24	24	16,36 x 2,20	GE-S-12-3/4"-UNF
630	12	7/8"-14 UNF	32,5	14,8	12,7	27	24	19,18 x 2,46	GE-S-12-7/8"-UNF
630	14	9/16"-18 UNF	37,0	19,0	10,0	24	27	11,90 x 1,98	GE-S-14-9/16"-UNF
630	14	3/4"-16 UNF	37,0	19,0	11,2	24	27	16,36 x 2,20	GE-S-14-3/4"-UNF
400	16	9/16"-18 UNF	51,0	19,5	10,0	27	30	11,90 x 1,98	GE-S-16-9/16"-UNF
400	16	3/4"-16 UNF	37,0	18,5	11,2	27	30	16,36 x 2,20	GE-S-16-3/4"-UNF
400	16	7/8"-14 UNF	33,5	15,5	14,0	30	30	19,18 x 2,46	GE-S-16-7/8"-UNF
400	16	1 1/16"-12 UN	37,0	18,5	15,0	32	30	23,47 x 2,95	GE-S-16-1 1/16"-UN
400	20	3/4"-16 UNF	45,0	20,5	11,2	32	36	16,36 x 2,20	GE-S-20-3/4"-UNF

400	20	7/8"-14 UNF	46,5	20,5	12,7	32	36	19,18 x 2,46	GE-S-20-7/8"-UNF
400	20	1 1/16"-12 UN	45,0	20,5	15,0	32	36	23,47 x 2,95	GE-S-20-1 1/16"-UN
400	20	1 5/16"-12 UN	45,0	22,5	15,0	41	36	29,74 x 2,95	GE-S-20-1 5/16"-UN
400	25	1 1/16"-12 UN	47,0	23,0	15,0	41	46	23,47 x 2,95	GE-S-25-1 1/16"-UN
400	25	1 5/16"-12 UN	47,0	23,0	15,0	41	46	29,74 x 2,95	GE-S-25-1 5/16"-UN
400	30	1 1/16"-12 UN	50,0	23,5	15,0	46	50	23,47 x 2,95	GE-S-30-1 1/16"-UN
400	30	1 5/16"-12 UN	50,0	23,5	15,0	46	50	29,74 x 2,95	GE-S-30-1 5/16"-UN
400	30	1 5/8"-12 UN	50,0	23,5	15,0	50	50	37,46 x 3,00	GE-S-30-1 5/8"-UN
315	38	1 5/16"-12 UN	57,0	26,0	15,0	55	60	29,74 x 2,95	GE-S-38-1 5/16"-UN
315	38	1 5/8"-12 UN	57,0	26,0	15,0	55	60	37,46 x 3,00	GE-S-38-1 5/8"-UN
315	38	1 7/8"-12 UN	57,0	26,0	15,0	55	60	43,69 x 3,00	GE-S-38-1 7/8"-UN