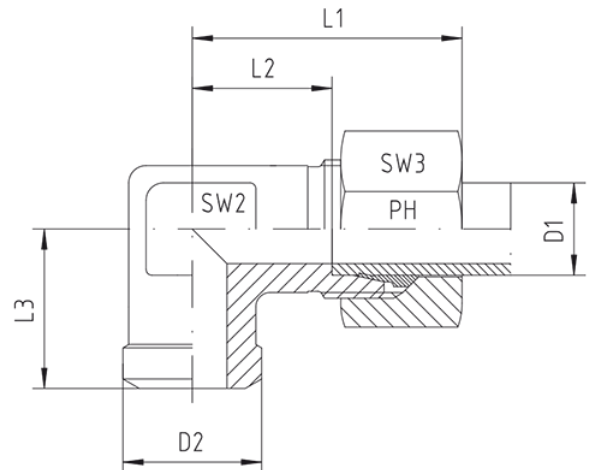
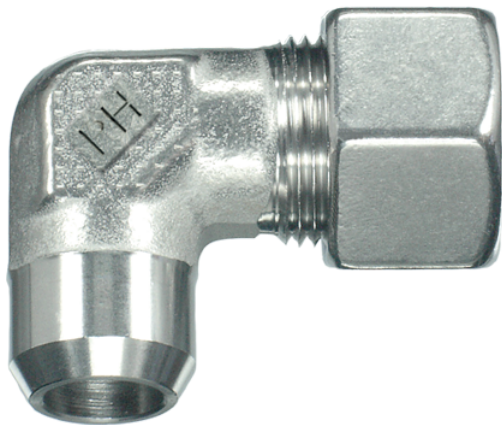


## Rubrik 10.11

### WAS - Winkel-Verschraubungen - SC



#### Winkel-Anschweißverschraubungen

Druck	Rohr A.D.		Ca. Maße					Bestellzeichen
	PN	D1	D2	L1	L2	L3	SW2	

#### Reihe L

500	6	10	27,0	12,0	19,0	12	14	WAS-L-06-SC
500	8	12	29,0	14,0	23,0	12	17	WAS-L-08-SC
500	10	14	30,0	15,0	24,0	14	19	WAS-L-10-SC
400	12	16	32,0	17,0	25,0	17	22	WAS-L-12-SC
400	15	19	36,0	21,0	30,0	19	27	WAS-L-15-SC
400	18	22	40,0	23,5	33,0	24	32	WAS-L-18-SC
250	22	27	44,0	27,5	37,0	27	36	WAS-L-22-SC
250	28	32	47,0	30,5	42,0	36	41	WAS-L-28-SC
250	35	40	56,0	34,5	49,0	41	50	WAS-L-35-SC
250	42	46	63,0	40,0	57,0	50	60	WAS-L-42-SC

#### Reihe S

800	6	11	31,0	16,0	23,0	12	17	WAS-S-06-SC
800	8	13	32,0	17,0	24,0	14	19	WAS-S-08-SC
800	10	15	34,0	17,5	25,0	17	22	WAS-S-10-SC
630	12	17	38,0	21,5	29,0	17	24	WAS-S-12-SC
630	14	19	40,0	22,0	30,0	19	27	WAS-S-14-SC
630	16	21	43,0	24,5	33,0	24	30	WAS-S-16-SC

420	20	26	48,0	26,5	37,0	27	36	WAS-S-20-SC
420	25	31	54,0	30,0	42,0	36	46	WAS-S-25-SC
420	30	36	62,0	35,5	49,0	41	50	WAS-S-30-SC
420	38	44	72,0	41,0	57,0	50	60	WAS-S-38-SC