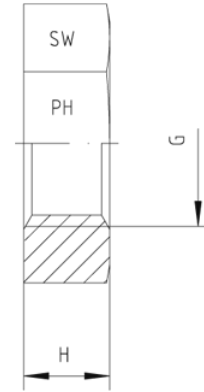
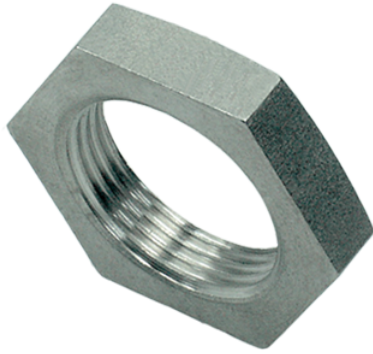


## Rubrik 6.18

### Gegenmuttern



#### Gegenmuttern für Schottverschraubungen

| Gewinde       | Ca. Maße   |    | Bestellzeichen |
|---------------|------------|----|----------------|
|               | G = UNF/UN | H  |                |
| 7/16"-20 UNF  | 6,4        | 17 | 1252523-04     |
| 1/2"-20 UNF   | 6,4        | 19 | 1252523-05     |
| 9/16"-18 UNF  | 6,9        | 22 | 1252523-06     |
| 3/4"-16 UNF   | 7,9        | 24 | 1252523-08     |
| 7/8"-14 UNF   | 9,1        | 30 | 1252523-10     |
| 1 1/16"-12 UN | 10,6       | 36 | 1252523-12     |
| 1 5/16"-12 UN | 10,4       | 41 | 1252523-16     |
| 1 5/8"-12 UN  | 10,4       | 50 | 1252523-20     |
| 1 7/8"-12 UN  | 10,4       | 55 | 1252523-24     |
| 2 1/2"-12 UN  | 10,4       | 70 | 1252523-32     |