



Messanschlüsse Pressure Gauge Connectors





MESSANSCHLÜSSE PRESSURE GAUGE CONNECTORS

Produktgruppen	Product-Groups	Seite / Page	
MAS - Messanschlüsse	MAS - Test Point - Pressure - Gauge - Connectors		
MAS - Metrisch mit O-Ring	MAS - Metric with O-Ring	14.2	
MAS - Withworth Rohrgewinde	MAS - BSP Parallel	14.2	
MAS - NPT	MAS - NPT	14.2	
GMV - Gerade - Messverschraubungen	GMV - Straight - Test Point - Pressure - Gauge - Fittings		
GMV - Standard	GMV - Standard	14.3	
GMV - SC	GMV - SC	14.4	
GMV - OMD	GMV - OMD	14.5	
VKA-DKO - Messanschlüsse	VKA-DKO - Test Point - Pressure - Gauge - Connectors		
VKA - DKOL	VKA - DKOL	14.6	
VKA - DKOS	VKA - DKOS	14.6	
SMS - Hochdruck - Messschläuche	SMS - High Pressure - Test - Hoses		
SMS - Hochdruck Messschläuche	SMS - High Pressure Test Hoses	14.7	
SMA - Manometer - Messanschlüsse	SMA - Gauge Test Adaptors		
SMA - Manometer - Messanschlüsse	SMA - Gauge Test Adaptors	14.8	
SMD - Manometer-Direktanschlüsse	SMD - Direct - Gauge - Adaptors		
SMD - Manometer - Direktanschlüsse	SMD - Direct - Gauge - Adaptors	14.9	

Standard = Überwurfmutter blank / Tube nuts are supplied unplated

SC = Überwurfmutter bis Größe 12-S ist gleitbeschichtet / Tube nuts until size 12-L are supplied chemical plated

= Überwurfmutter ab Größe 12-S ist mit versilbertem Gewinde / Tube nuts from size 12-S are supplied with silver plated thread

OMD = Verschraubung ohne Überwurfmutter und Schneidring am Außengewinde / Couplings are supplied without nut and cutting ring at male thread

MAS - MESSANSCHLÜSSE

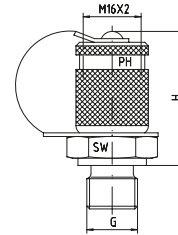
MAS - TEST POINT - PRESSURE - GAUGE - CONNECTORS



EDELSTAHL / STAINLESS STEEL
VERBINDUNGSTECHNIK
FLUID CONNECTORS

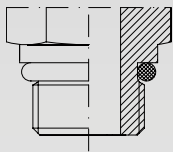
Mit Schraubkupplung M 16 x 2
O-Ring - FPM

With Connection M 16 x 2
O-ring - FPM



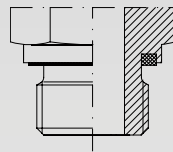
Druck Pressure	Gewinde Thread	Ca. Maße Approx. Dimensions		Abdichtung Sealing	Bemerkungen Notes	Bestellzeichen Order-Code
PN	G	H	SW			
630	M 8 x 1	37,0	17	O-Ring Form A		MAS-M 8x1-or
630	M 10 x 1	37,0	17	O-Ring Form A		MAS-M 10x1-or
630	M 10 x 1	37,0	17	Weichdichtung / Soft Sealing Form C		MAS-M 10x1-wd
630	M 12 x 1,5	37,0	17	Weichdichtung / Soft Sealing Form C		MAS-M 12x1,5-wd
630	M 14 x 1,5	37,0	19	Weichdichtung / Soft Sealing Form C		MAS-M 14x1,5-wd
630	M 16 x 1,5	37,0	22	Weichdichtung / Soft Sealing Form C		MAS-M 16x1,5-wd
630	G 1/8"	37,0	17	Weichdichtung / Soft Sealing Form C		MAS-G 1/8"-wd
630	G 1/4"	37,0	19	Weichdichtung / Soft Sealing Form C		MAS-G 1/4"-wd
630	G 3/8"	40,0	22	Weichdichtung / Soft Sealing Form C		MAS-G 3/8"-wd
630	G 1/2"	40,0	27	Weichdichtung / Soft Sealing Form C		MAS-G 1/2"-wd
630	R 1/8" keg	36,0	17	Gewinde / Thread Form D		MAS-R 1/8"-k
630	R 1/4" keg	36,0	17	Gewinde / Thread Form D		MAS-R 1/4"-k
630	1/8" NPT	36,0	17	Gewinde / Thread Form D		MAS-1/8"-NPT
630	1/4" NPT	37,0	17	Gewinde / Thread Form D		MAS-1/4"-NPT
630	3/8" NPT	40,0	19	Gewinde / Thread Form D		MAS-3/8"-NPT
630	1/2" NPT	40,0	22	Gewinde / Thread Form D		MAS-1/2"-NPT

Form A



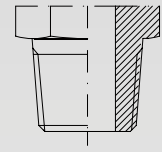
Abdichtung durch Runddichtung (O-Ring) - SAE J 514
Sealing by O-ring in Thread Undercut - SAE J 514

Form C



WD = Abdichtung durch gekammerte Profildichtung - FPM
WD = Sealing by an Elastomer Captive Profiled Ring - FPM

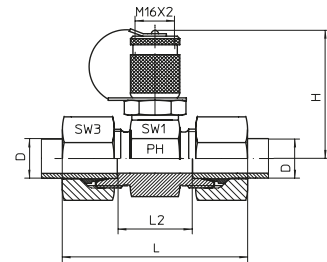
Form D



Abdichtung kegelig oder NPT
Sealing by Taper or NPT

Mit Schraubkupplung M 16 x 2
O-Ring - FPM
Lieferung komplett mit Mutter und Schneidring

With Connection M 16 x 2
O-ring - FPM
Delivery complete with Nut and Cutting Ring



Reihe / Series L

Druck Pressure	Rohr A.D. Tube O.D.	Ca. Maße Approx. Dimensions					Bemerkungen Notes	Bestellzeichen Order-Code
PN	D	L	L2	H	SW1	SW3		
315	6	50,5	27,0	49,5	24	14		GMV-L-06
315	8	50,5	27,0	49,5	24	17		GMV-L-08
315	10	52,5	29,0	49,5	24	19		GMV-L-10
315	12	52,5	29,0	49,5	24	22		GMV-L-12
315	15	54,5	29,0	52,5	30	27		GMV-L-15
315	18	56,5	29,0	53,5	32	32		GMV-L-18
160	22	60,5	33,0	55,5	32	36		GMV-L-22
160	28	60,5	33,0	58,0	41	41		GMV-L-28
160	35	68,5	31,0	60,5	46	50		GMV-L-35
160	42	70,5	36,0	65,0	55	60		GMV-L-42

Reihe / Series S

Druck Pressure	Rohr A.D. Tube O.D.	Ca. Maße Approx. Dimensions					Bemerkungen Notes	Bestellzeichen Order-Code
PN	D	L	L2	H	SW1	SW3		
630	6	54,5	31,0	49,5	24	17		GMV-S-06
630	8	54,5	31,0	49,5	24	19		GMV-S-08
630	10	56,5	30,0	49,5	24	22		GMV-S-10
630	12	56,5	28,0	49,5	24	24		GMV-S-12
630	14	62,5	31,0	51,0	27	27		GMV-S-14
400	16	62,5	30,0	52,5	30	30		GMV-S-16
400	20	68,5	31,0	55,5	32	36		GMV-S-20
400	25	74,5	32,0	58,0	41	46		GMV-S-25
400	30	80,5	33,0	60,5	46	50		GMV-S-30
315	38	91,0	32,0	65,0	55	60		GMV-S-38

GMV - GERADE - MESSVERSCHRAUBUNGEN

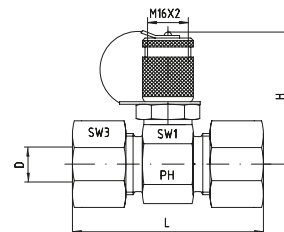
GMV - STRAIGHT - TEST POINT - PRESSURE - GAUGE - FITTINGS



EDELSTAHL / STAINLESS STEEL
VERBINDUNGSTECHNIK
FLUID CONNECTORS

Mit Schraubkupplung M 16 x 2
O-Ring - FPM
Lieferung komplett mit Mutter und Schneidring

With Connection M 16 x 2
O-ring - FPM
Delivery complete with Nut and Cutting Ring



Reihe / Series L

Druck Pressure	Rohr A.D. Tube O.D.	Ca. Maße Approx. Dimensions		Bemerkungen Notes		Bestellzeichen Order-Code
PN	D	L	H	SW1	SW3	
315	6	50,5	49,5	24	14	GMV-L-06-SC
315	8	50,5	49,5	24	17	GMV-L-08-SC
315	10	52,5	49,5	24	19	GMV-L-10-SC
315	12	52,5	49,5	24	22	GMV-L-12-SC
315	15	54,5	52,5	30	27	GMV-L-15-SC
315	18	56,5	53,5	32	32	GMV-L-18-SC
160	22	60,5	55,5	32	36	GMV-L-22-SC
160	28	60,5	58,0	41	41	GMV-L-28-SC
160	35	68,5	60,5	46	50	GMV-L-35-SC
160	42	70,5	65,0	55	60	GMV-L-42-SC

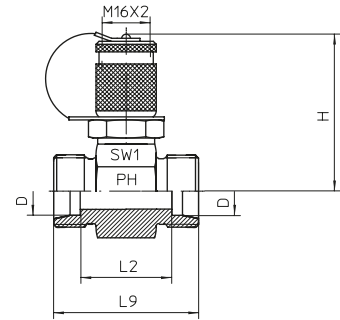
Reihe / Series S

Druck Pressure	Rohr A.D. Tube O.D.	Ca. Maße Approx. Dimensions		Bemerkungen Notes		Bestellzeichen Order-Code
PN	D	L	H	SW1	SW3	
630	6	54,5	49,5	24	17	GMV-S-06-SC
630	8	54,5	49,5	24	19	GMV-S-08-SC
630	10	56,5	49,5	24	22	GMV-S-10-SC
630	12	56,5	49,5	24	24	GMV-S-12-SC
630	14	62,5	51,0	27	27	GMV-S-14-SC
400	16	62,5	52,5	30	30	GMV-S-16-SC
400	20	68,5	55,5	32	36	GMV-S-20-SC
400	25	74,5	58,0	41	46	GMV-S-25-SC
400	30	80,5	60,5	46	50	GMV-S-30-SC
315	38	91,0	65,0	55	60	GMV-S-38-SC



Mit Schraubkupplung M 16 x 2
O-Ring - FPM

With Connection M 16 x 2
O-ring - FPM



Reihe / Series L

Druck Pressure	Rohr A.D. Tube O.D.					Bemerkungen Notes	Bestellzeichen Order-Code
PN	D	L2	L9	H	SW1		
315	6	27,0	41,0	49,5	24		GMV-L-06-OMD
315	8	27,0	41,0	49,5	24		GMV-L-08-OMD
315	10	29,0	43,0	49,5	24		GMV-L-10-OMD
315	12	29,0	43,0	49,5	24		GMV-L-12-OMD
315	15	29,0	43,0	52,5	30		GMV-L-15-OMD
315	18	29,0	44,0	53,5	32		GMV-L-18-OMD
160	22	33,0	48,0	55,5	32		GMV-L-22-OMD
160	28	33,0	48,0	58,0	41		GMV-L-28-OMD
160	35	31,0	52,0	60,5	46		GMV-L-35-OMD
160	42	36,0	58,0	65,0	55		GMV-L-42-OMD

Reihe / Series S

Druck Pressure	Rohr A.D. Tube O.D.					Bemerkungen Notes	Bestellzeichen Order-Code
PN	D	L2	L9	H	SW1		
630	6	31,0	45,0	49,5	24		GMV-S-06-OMD
630	8	31,0	45,0	49,5	24		GMV-S-08-OMD
630	10	30,0	45,0	49,5	24		GMV-S-10-OMD
630	12	28,0	43,0	49,5	24		GMV-S-12-OMD
630	14	31,0	47,0	51,0	27		GMV-S-14-OMD
400	16	30,0	47,0	52,5	30		GMV-S-16-OMD
400	20	31,0	52,0	55,5	32		GMV-S-20-OMD
400	25	32,0	56,0	58,0	41		GMV-S-25-OMD
400	30	33,0	60,0	60,5	46		GMV-S-30-OMD
315	38	32,0	64,0	65,0	55		GMV-S-38-OMD

VKO-DKO - MESSANSCHLÜSSE

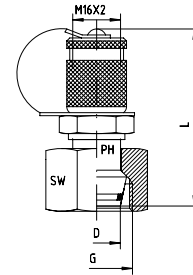
VKO-DKO - TEST POINT - PRESSURE - GAUGE - CONNECTORS



EDELSTAHL / STAINLESS STEEL
VERBINDUNGSTECHNIK
FLUID CONNECTORS

Mit Schraubkupplung M 16 x 2
Anschluss mit Dichtkegel und O-Ring - FPM
Passend in Bohrungsform W DIN 3861
Mit 24°-Konus

With Connection M 16 x 2
Connection with Taper and O-ring - FPM
For Port End W DIN 3861
With 24°-cone



Reihe / Series L

Druck Pressure	Rohr A.D. Tube O.D.	Gewinde Thread	Ca. Maße Approx. Dimensions		Bemerkungen Notes	Bestellzeichen Order-Code
PN	D	G	L	SW		
315	6	M 12 x 1,5	72,0	14		VKA-DKOL-06
315	8	M 14 x 1,5	58,0	17		VKA-DKOL-08
315	10	M 16 x 1,5	58,0	19		VKA-DKOL-10
315	12	M 18 x 1,5	54,0	22		VKA-DKOL-12
315	15	M 22 x 1,5	57,0	27		VKA-DKOL-15
315	18	M 26 x 1,5	59,0	32		VKA-DKOL-18
160	22	M 30 x 2	60,0	36		VKA-DKOL-22
160	28	M 36 x 2	65,0	41		VKA-DKOL-28
160	35	M 45 x 2	70,0	50		VKA-DKOL-35
160	42	M 52 x 2	71,0	60		VKA-DKOL-42

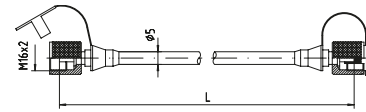
Reihe / Series S

Druck Pressure	Rohr A.D. Tube O.D.	Gewinde Thread	Ca. Maße Approx. Dimensions		Bemerkungen Notes	Bestellzeichen Order-Code
PN	D	G	L	SW		
630	6	M 14 x 1,5	72,0	17		VKA-DKOS-06
630	8	M 16 x 1,5	58,0	19		VKA-DKOS-08
630	10	M 18 x 1,5	58,0	22		VKA-DKOS-10
630	12	M 20 x 1,5	54,0	24		VKA-DKOS-12
630	14	M 22 x 1,5	70,0	27		VKA-DKOS-14
400	16	M 24 x 1,5	55,0	30		VKA-DKOS-16
400	20	M 30 x 2	64,0	36		VKA-DKOS-20
400	25	M 36 x 2	66,0	46		VKA-DKOS-25
400	30	M 42 x 2	70,0	50		VKA-DKOS-30
315	38	M 52 x 2	72,0	60		VKA-DKOS-38



Mit Schraubkupplung M 16 x 2

With Metric Swivel End M 16 x 2



Druck Pressure	Schlauch Hose	Gewinde Thread	Länge Length	Bemerkungen Notes	Bestellzeichen Order-Code
PN	DN		L		
630	02	M 16 x 2	200		SMS-M 16-200
630	02	M 16 x 2	400		SMS-M 16-400
630	02	M 16 x 2	630		SMS-M 16-630
630	02	M 16 x 2	800		SMS-M 16-800
630	02	M 16 x 2	1000		SMS-M 16-1000
630	02	M 16 x 2	1500		SMS-M 16-1500
630	02	M 16 x 2	2000		SMS-M 16-2000
630	02	M 16 x 2	2500		SMS-M 16-2500
630	02	M 16 x 2	3200		SMS-M 16-3200
630	02	M 16 x 2	4000		SMS-M 16-4000

SMA - MANOMETER - MESSANSCHLÜSSE

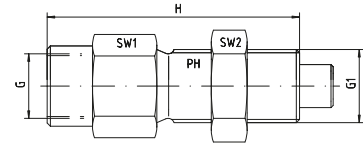
SMA - GAUGE - TEST - ADAPTORS



EDELSTAHL / STAINLESS STEEL
VERBINDUNGSTECHNIK
FLUID CONNECTORS

Innengewinde - Starr: BSP + NPT
Außengewinde: M 16 x 2
Dichtung: FPM

Female Thread: BSP + NPT
Male Thread: M 16 x 2
Sealing: FPM

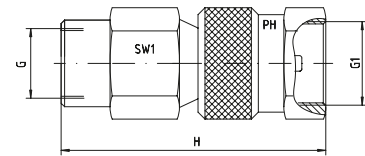


Druck Pressure	Gewinde Thread		Ca. Maße Approx. Dimensions			Bemerkungen Notes	Bestellzeichen Order-Code
	G	G1	H	SW1	SW2		
630	1/4" BSP	M 16 x 2	50,0	19	19		SMA-20-G 1/4"-V
630	1/2" BSP	M 16 x 2	60,0	27	19		SMA-20-G 1/2"-V
630	1/4" NPT	M 16 x 2	50,0	19	19		SMA-20-1/4"-NPT-V
630	1/2" NPT	M 16 x 2	60,0	27	19		SMA-20-1/2"-NPT-V



Innengewinde - Starr: BSP + NPT
Muttergewinde: M 16 x 2

Female Thread: BSP + NPT
Nut Female Swivel: M 16 x 2



Druck Pressure	Gewinde Thread		Ca. Maße Approx. Dimensions		Bemerkungen Notes	Bestellzeichen Order-Code
PN	G	G1	H	SW1		
630	1/4" BSP	M 16 x 2	41,0	19		SMD-20-R 1/4"
630	1/2" BSP	M 16 x 2	51,0	27		SMD-20-R 1/2"
630	1/4" NPT	M 16 x 2	41,0	19		SMD-20-1/4"-NPT
630	1/2" NPT	M 16 x 2	51,0	27		SMD-20-1/2"-NPT

