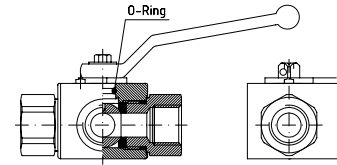


DREIWEGE-UMSCHALT-KUGELHÄHNE - BK 3

THREE-WAY BALL VALVES - BK 3



EDELSTAHL / STAINLESS STEEL
VERBINDUNGSTECHNIK
FLUID CONNECTORS



Dreiwege-Umschalt-Kugelhähne - BK 3
L- oder T-Bohrung
DN 4 bis DN 50

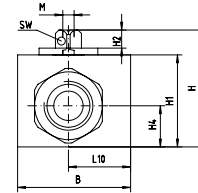
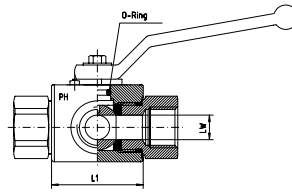
Gehäuse, Kugel und Schaltwelle, 1.4571 (AISI 316Ti)

Unsere Kugelhähne werden einzeln einer Prüfung auf Festigkeit, Dichtheit und besonderen geltenden Richtlinien unterzogen.
Abnahmeprüfzeugnis 3.1 nach EN 10204 kann auf Anfrage, gegen Berechnung, mitgeliefert werden.

Three-Way Ball Valves - BK 3
L- or T-Bore
DN 4 to DN 50

Body, Ball and Stem, 1.4571 (AISI 316Ti)

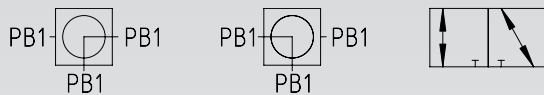
Each PH ball valve is subject to an inspection for resistance, sealing and special characteristics.
Inspection control certificates 3.1 according to EN 10204 can be supplied on request against invoice.



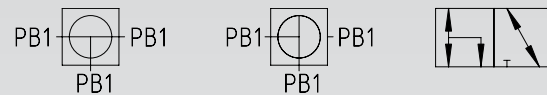
DN mm	PB1 bar	L1 mm	B mm	H mm	H1 mm	H2 mm	H4 mm	M mm	SW mm
4	400	35	40	46,5	35	8,0	16,0	M 5	9
6	400	35	40	46,5	35	8,0	16,0	M 5	9
8	400	35	40	46,5	35	8,0	16,0	M 5	9
10	400	42	45	51,5	40	8,0	18,0	M 5	9
13	400	47	50	56,0	40	8,0	17,0	M 5	9
20	320	61	65	73,5	57	12,0	24,5	M 6	14
25	350	63	80	81,5	65	12,0	30,0	M 6	14
32	350	78	100	99,0	80	13,5	38,0	M 8	17
40	250	85	105	109,0	90	13,5	42,0	M 8	17
50	250	100	120	139,0	120	13,5	62,0	M 8	17

Der angegebene Betriebsdruck PB ist nur gültig für die Standardausführung 4423.
The indicated working pressure PB is only valid for the standard version 4423.

Gehäusemaße gültig für alle Kombinationen.
Body dimensions are for all the combinations.



Typ LA: L-Bohrung 0° - 90° allseitig druckbeaufschlagbar
Type LA: L-bore 0° - 90° pressured from all ports possible



Typ TA: T-Bohrung 0° - 90° allseitig druckbeaufschlagbar
Type TA: T-bore 0° - 90° pressured from all ports possible

DREIWEGE-UMSCHALT-KUGELHÄHNE - BK 3

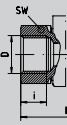
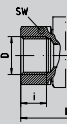
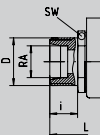
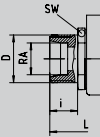
THREE-WAY BALL VALVES - BK 3



EDELSTAHL / STAINLESS STEEL
VERBINDUNGSTECHNIK
FLUID CONNECTORS

*Max. zulässige Druckstufen (PB) entnehmen Sie bitte den Angaben der Schneidringverschraubungen.

*Max. allowed pressure (PB) see at the data from the compression couplings.

Anschlussart Connection	Ca. Maße Approx. Dimensions								
	DN	LW	D	RA	L	L10	i	SW	
01 • Rohrgewinde • DIN ISO 228 • BSP Female Thread • DIN ISO 228 	4	5,0	G 1/8"		69	26,0	9	22	
	6	6,0	G 1/4"		69	26,0	12	22	
	10	9,0	G 3/8"		73	28,0	12	27	
	13	11,5	G 1/2"		85	32,0	14	30	
	20	18,0	G 3/4"		96	40,5	17	41	
	25	22,0	G 1"		113	51,0	19	46	
	32	30,0	G 1 1/4"		110	62,0	20	60	
	40	35,0	G 1 1/2"		120	65,0	24	70	
	50	44,0	G 2"		140	72,0	28	85	
	02 • NPT-Innengewinde • ANSI B 2.1 • NPT Female Thread • ANSI B 2.1 	4	5,0	1/8"-27 NPT		69	26,0	12	22
		6	6,0	1/4"-18 NPT		69	26,0	17	22
10		9,0	3/8"-18 NPT		73	28,0	17	27	
13		11,5	1/2"-14 NPT		92	32,0	22	30	
20		18,0	3/4"-14 NPT		97	40,5	23	41	
25		22,0	1"-11,5 NPT		113	51,0	27	46	
32		30,0	1 1/4"-11,5 NPT		115	62,0	28	60	
40		35,0	1 1/2"-11,5 NPT		138	65,0	28	70	
50		44,0	2"-11,5 NPT		140	72,0	30	85	
03* • Rohrverschraubung • Leichte Reihe DIN 2353 • For Compression Fitting • Light Series DIN 2353 		4	5,0	M 12 x 1,5	6	67	41,5	10	22
		6	6,0	M 14 x 1,5	8	67	41,5	10	22
	8	7,0	M 16 x 1,5	10	71	41,5	11	22	
	10	9,0	M 18 x 1,5	12	75	44,5	11	27	
	13	11,5	M 22 x 1,5	15	84	50,0	12	30	
	13	11,5	M 26 x 1,5	18	84	50,0	12	32	
	20	18,0	M 30 x 2	22	102	60,5	14	41	
	25	22,0	M 36 x 2	28	108	72,0	14	46	
	32	30,0	M 45 x 2	35	128	86,0	16	60	
	40	35,0	M 52 x 2	42	133	89,0	16	70	
	04* • Rohrverschraubung • Schwere Reihe DIN 2353 • For Compression Fitting • Heavy Series DIN 2353 	4	5,0	M 14 x 1,5	6				
4		5,0	M 16 x 1,5	8	73	44,5	12	22	
6		6,0	M 18 x 1,5	10	73	44,5	12	22	
8		7,0	M 20 x 1,5	12	77	46,0	12	22	
10		9,0	M 22 x 1,5	14	84	48,5	14	27	
13		11,5	M 24 x 1,5	16	87	51,5	14	30	
13		11,5	M 30 x 2	20	91	51,5	16	32	
20		18,0	M 36 x 2	25	110	64,5	18	41	
25		22,0	M 42 x 2	30	120	78,0	20	46	
32		30,0	M 52 x 2	38	140	92,0	22	60	