

NIEDERDRUCK-KUGELHÄHNE

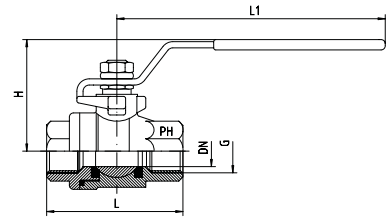
LOW PRESSURE BALL VALVES



EDELSTAHL / STAINLESS STEEL
VERBINDUNGSTECHNIK
FLUID CONNECTORS

Rohrinnengewinde: DIN / ISO 228
Zweiteilig - 1.4408
Volle Bohrung
Dichtungen: Kugel + Schaltwelle = PTFE (-20°C + 180°C)
Bei höheren Temperaturen beachten Sie bitte das Druck- / Temperaturdiagramm.

BSP Female Thread: DIN / ISO 228
Two-piece - AISI 316
Full-Port
Sealings: Ball + Stem = PTFE (-20°C to +180°C)
At higher temperatures please note the pressure / temperature diagram.



DN	Größe	Druck	Ca. Maße mm				Bemerkungen	Bestellzeichen	Brutto-Preis
	Size	Pressure	Approx. Dimensions mm						Order-Code
		PB	G	H	L	L1			Euro (€)
8,5	1/8"	63	1/8"	50	55,0	100,0		KH-G 1/8"	18,35
11,5	1/4"	63	1/4"	50	55,0	100,0		KH-G 1/4"	18,35
12,5	3/8"	63	3/8"	50	55,0	100,0		KH-G 3/8"	18,35
15,0	1/2"	63	1/2"	60	65,0	130,0		KH-G 1/2"	21,40
20,0	3/4"	63	3/4"	64	72,0	130,0		KH-G 3/4"	26,85
25,0	1"	63	1"	71	84,0	165,0		KH-G 1"	38,00
32,0	1 1/4"	63	1 1/4"	78	94,0	165,0		KH-G 1 1/4"	49,70
38,0	1 1/2"	63	1 1/2"	86	110,0	190,0		KH-G 1 1/2"	73,50
50,0	2"	63	2"	95	126,0	190,0		KH-G 2"	96,75
65,0	2 1/2"	40	2 1/2"	130	161,0	250,0		KH-G 2 1/2"	242,00
80,0	3"	40	3"	148	178,0	250,0		KH-G 3"	326,85

